

MAKING MEMORIES IN SOUTHEAST IDAHO!

Visit our calendar of events for activities happening all year! There's heritage & winter festivals, concerts, plays, fishing derbies, rodeos, ski races, horseraces, freestyle competitions, tractor pulls, corn mazes, triathlons, marathons, 5k's & more!

IdahoHighCountry.org/events



1 BLACKFOOT

The city of Blackfoot is famously known as the "Potato Capital of the World" because more potatoes are grown here than anywhere else! Learn about potato production and see antique farming equipment at the Idaho Potato Museum. Remember to take a selfie with the giant Idaho spud! Tour the many murals in historic downtown Blackfoot and visit shops in restored buildings like the Candy Jar for amazing homemade fudge! For boating and fishing,



Jensen Grove offers 35-acres of pristine water, a skate park, basketball courts, a 6.5-mile paved trail, sandy beaches, amphitheater, playgrounds, and picnic areas. See native butterflies at The Butterfly Haven located only a few miles west of Blackfoot. Major community events

include Celebrate Blackfoot, the last weekend of June, and the weeklong Eastern Idaho State Fair, starting Labor Day weekend.



For more information: Idaho Potato Museum & Visitor Information Center (208) 785-2517

2 FORT HALL

North of Pocatello is the Fort Hall Reservation, home of the Shoshone-Bannock Tribes. The Shoshone and Bannock bands signed the Fort Bridger Treaty on July 3, 1868, and is the largest reservation in the state of Idaho. Visitors are welcome to Fort Hall every 2nd week in August to witness their Shoshone-Bannock Indian Festival, Idaho's largest outdoor cultural celebration and listed in the Top 100 Indian Country Events (www.shobanfestival.com).



The festival is home to the famous Indian Relay Races, a traditional horse competition, and Art & Crafts market selling their famous handmade bead work. While visiting, stay overnight at the Shoshone-Bannock Casino Hotel and enjoy gaming, a spa visit,



dine at the Camas Grill for cultural cuisine, and shop at the Donzita Gift Shop for some unique cultural gifts.

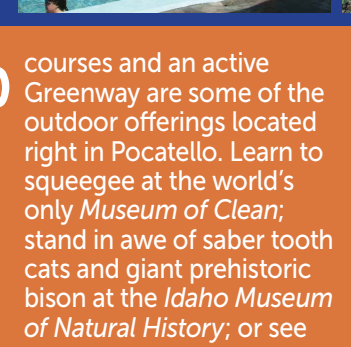


3 AMERICAN FALLS & MASSACRE ROCKS STATE PARK

The American Falls area is an outdoorsman's paradise. The city of American Falls sits along the banks of a large reservoir and the Snake River. The reservoir contains 56,000-acres of deep water for boating and fishing enthusiasts. Birding is a popular sport in American Falls with over 200 bird species flying along this migration corridor. Willow Bay and Sportsman's Park are



two camping sites located right on the reservoir. Indian Springs Resort and RV is only a few minutes south of American Falls Reservoir with the main attraction being their naturally heated, 90° F



swimming pool. Southwest of American Falls is Massacre Rocks State Park. The park has a campground, hiking trails, boat ramps, a disc golf course, and a visitor's center.



For more information: Greater American Falls Area Chamber of Commerce AmFallsChamber.com



4 POCATELLO

Amazing outdoor recreation, scenic beauty, and a rich history grace the Pocatello area. Challenging rock-climbing, world-class mountain bike trails, traditional and disc golf



courses and an active Greenway are some of the outdoor offerings located right in Pocatello. Learn to squeegee at the world's only Museum of Clean; stand in awe of saber tooth cats and giant prehistoric bison at the Idaho Museum of Natural History; or see



Native American and pioneer history come alive at the life size Fort Hall Replica and Bannock County Historical Complex. Float the lazy river at the aquatic center; enjoy strolling through the original architecture in Historic Downtown Pocatello; or see Grizzlies, Cougars,



Bison and the other native species of Yellowstone up-close at the Zoo Idaho.



5 LAVA HOT SPRINGS

Lava Hot Springs is the go-to vacation town to unwind thanks to the World-Famous Lava Hot Pools, an all-natural hot spring facility open year-round to the public. Five sulfur-free mineral pools range in temperature



cool down. The Olympic Swimming Complex has diving platforms up to 10 meters high, diving boards, four speed and water slides, and an AquaZip'N around a million-gallon pool. The Indoor Aquatic Center



from 102°F to 112°F. For some summertime and Portneuf Kiddie Cove portions of the complex are open all year. Throughout town the many attractions such as the zipline and challenge course, river tubing, go-karts, golf, wagon rides, hiking, a museum, shopping, and a diverse selection of restaurants make a stay in



Lava Hot Springs unbeatable. There are 300 overnight lodging accommodations and 400 RV hookups.

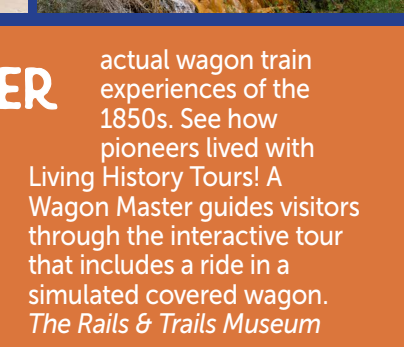


6 SODA SPRINGS & CARIBOU COUNTY

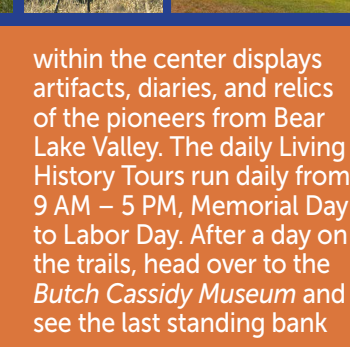
Soda Springs is a pioneer playground. There are numerous historic sites including Oregon Trail wagon ruts remaining from the migration west, the world's only captive geyser,



Sheep Rock Point, naturally carbonated water at Hooper Springs Park, and many more! Visit Formation Springs and Cave Preserve or Grays Lake National Wildlife Refuge for scenic wildlife views or play



a round of golf. During the winter months, try out the cross-country ski trails at Kelly Park and Bailey Creek or drop an ice fishing line at Alexander Reservoir. Take a day trip 30 minutes west of Soda Springs to the historic



ghost town of Chesterfield, a National Historic District with five buildings on the National register of Historic Places.



7 MONTPELIER

Pioneer country here we come! The National Oregon/California Trail Center, located at the junction of U.S. 89 and 30, takes visitors back to the olden days with live performances reenacting



actual wagon train experiences of the 1850s. See how pioneers lived with Living History Tours! A Wagon Master guides visitors through the interactive tour that includes a ride in a simulated covered wagon. The Rails & Trails Museum



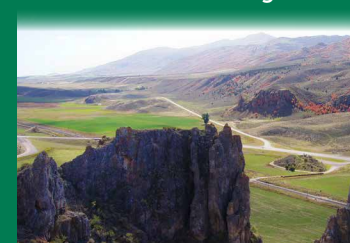
within the center displays artifacts, diaries, and relics of the pioneers from Bear Lake Valley. The daily Living History Tours run daily from 9 AM - 5 PM, Memorial Day to Labor Day. After a day on the trails, head over to the Butch Cassidy Museum and see the last standing bank



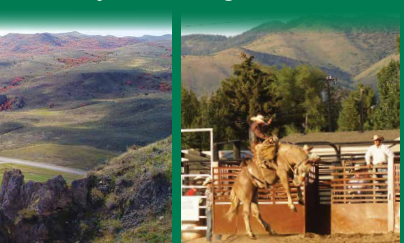
that Butch Cassidy robbed! National Oregon/California Trail Center 320 N. 4th St Montpelier, Idaho 83254 OregonTrailCenter.org (208) 847-3800 or 866-847-3800

8 DOWNEY

Carved by water from the Lake Bonneville Flood 15,000 years ago, Marsh Valley is the home of Downey, a rural town of 775 residents. Downey was once the most thriving



town in Idaho and has much to offer in rustic beauty and hospitality. Historically, Downey is recognized for its contributions to the first stagecoach station in Southeast Idaho, as well as the first route of the Pony Express in Idaho. The Bannock County Fair in August draws



folks for the parade, rodeo, fair food, and wacky events. A few miles southeast is Downata Hot Springs, an all-natural hot spring complex with water slides, soaking pools, and a naturally-heated swimming pool. Stay overnight in Downata in some quirky camping



accommodations like a Conestoga covered wagon, tepee, or yurt. The campsite is right by hiking and biking trails, birdwatching posts, and the swimming pool.



9 PRESTON & FRANKLIN

Located just over the Utah/Idaho border, Franklin is where Idaho history begins! Visit the Pioneer Relic Hall, Hatch Home, and the old City Hall in the Franklin Historic District. Drive north



to Preston to visit the Oneida Stake Academy, the oldest standing Mormon Academy building, and the Crowley Home near historic State Street. Get your 'yee-haw' on during the last weekend



in July at That Famous Preston Night Rodeo, the first nighttime rodeo in the world! Nearby is the 1863 Bear River Massacre Memorial Site where up to 400 Shoshone Native Americans were killed during an attack by U.S. Army California Volunteers. Just North of Preston lies the



Oneida Narrows Reservoir, a beautiful recreational area for fishing and boating activities. Swim or soak at nearby Riverdale Resort's pools and hot tubs.



10 BEAR LAKE

Nicknamed the "Caribbean of the Rockies", Bear Lake straddles the Utah-Idaho border with 20 miles of crystal clear, turquoise blue water. Summers are filled with on-the-water



action such as fishing, boating, jet skiing, SUPs, and sailing. Bear Lake is also bustling during winter with activities like snowmobiling, cross country skiing, and ice fishing. The surrounding Wasatch-Cache National Forest offers hiking, biking, and ATV trails with



views overlooking Bear Lake. During the first weekend of August, Bear Lake hosts their annual Raspberry Days Festival, celebrating the famous Bear Lake raspberry harvest. The festival hosts a craft fair, live concerts, activities for kids, and, of course, lots of raspberry



treats. Camp overnight at North Beach State Park or reserve a cabin.



11 MALAD CITY

Just north of the Utah/Idaho State line off I-15, Malad Valley is nestled at the northern end of the Great Basin and the Rocky Mountain peaks. Enjoy open spaces, interesting canyons,



bubbling springs, limitless hiking, sight-seeing, camping, and water sports. Fish on seven reservoirs including trophy Cutthroat at Daniels Reservoir. In the fall, hunters test their skills with upland game birds, waterfowl, and big game animals. Winter's snowy



weather affords snowmobiling and snowshoeing in the high canyons. Nearby Samaria is home to Malad Valley Heritage Square, preserving the legacy of Welsh pioneers with authentic cabins and more. Join us for the Oneida County Cowboy Classic Rodeo & Fair (3rd week of August),



Parimutuel Horse Races (1st & 2nd weekends in August), 4th of July Celebration and fireworks, classic car show in May, and the Welsh Festival in June.



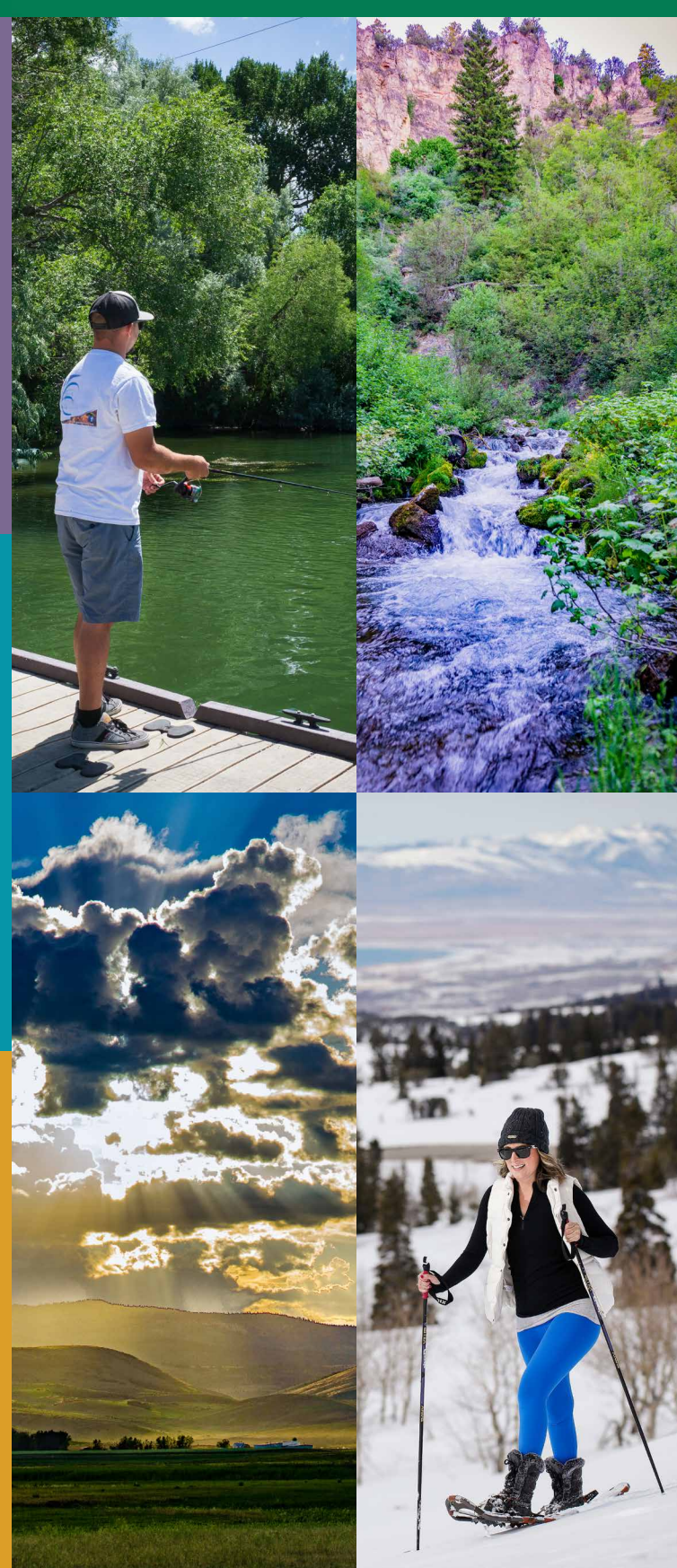
VISITOR'S GUIDE TO SOUTHEAST IDAHO



IdahoHighCountry.org visitidaho.org 20-V-1 125M



VISITOR'S GUIDE TO SOUTHEAST IDAHO





Forces of nature created them for us to enjoy, thankfully without the sulfur or chemical odor usually associated with natural hot springs. Several springs are developed and popular with visitors and locals alike.

AMERICAN FALLS *Indian Springs Resort & RV* (pictured right) is named for the historic encampment of Native Americans at this natural hot springs 2 miles southwest of American Falls on Hwy 37. Today you will find amenities such as a large heated swimming pool, a large park with shelters, spacious RV parking and tent sites. Nearby *Massacre Rocks State Park* is popular with Oregon Trail history buffs. For information call (208) 226-7700 or IndianSpringsResortAndRV.com.



DOWNEY *Downata Hot Springs* (pictured above and at bottom) is 3½ miles southeast of Downey on US 91. Natural hot water flows year round through this large swimming pool and soaking pools. The facility provides a meeting room, snack bar, restaurant, and tranquility room with sauna and massage room. During the summer, children enjoy the large water playground. Two large hydrotube rides and pool slides thrill all ages. The resort accommodates overnighters at several cabins and yurts or RV Park with hookups, tent sites, Conestoga wagons and tepees. Picnic areas are available for summer reunions. Winter and summer groups welcome. For information go to DownataHotSprings.com or (208) 897-5756.

LAVA HOT SPRINGS At *Idaho's World Famous Lava Hot Springs* (pictured at top and right), 2.5 million gallons of naturally-filtered odor free spring water flows through five hot pools at five different temperatures each day. Heated sidewalks and floors in the modern dressing rooms warm your feet to and from the pools. Numerous hot pools and indoor tubs are located throughout town at outdoor locations and in a number of hotels. For other pool information call the Lava Chamber of Commerce at (208) 776-5500, or visit LavaHotSprings.org. Lava Hot Springs is 11 miles east of I-15 exit 47 on US 30. Open year round 363 days a year. For information on *Idaho's World Famous Lava Hot Springs* visit LavaHotSprings.com or call 800-423-8597.

PRESTON *Riverdale Resort* (pictured right) features a large outdoor swimming pool and hot tubs fed by natural hot water, including a therapeutic jetted tub. A hydrotube pool and children's pool make this a good family outing. A gaming room and snack bar complement the changing and locker rooms. The resort has eight motel rooms with hot tubs in every room. Riverdale Resort is next to the Bear River in a very scenic valley five miles north of Preston at the intersection of state hwy 34 & 36, information at (208) 852-0266, or RiverdaleResort.com.



Whatever vacation you're looking for—non-stop activities for adventurous spirits or relaxing daytrips for an easy going pace—Southeast Idaho welcomes you to a backcountry paradise!

CAMPING Southeast Idaho is a camper's dream! Starry nights, scenic mountain ranges, a plethora of wildlife, and numerous outdoor activities will entice any outdoor lover to get into nature. No matter your camping style, Southeast Idaho will quickly become your go-to camping retreat. *Bear Lake State Park* and *Massacre Rocks State Park* are open for tent and trailer camping. There are also Ranger Guard stations scattered throughout the *Caribou-Targhee National Forest* which are open during the summer. Dozens of privately owned campgrounds and cabins rentals are available across the Southeast Idaho region.

TRAILS More than 1,000 miles of groomed trails for motorized ATVs and mountain bikes are within the public lands of Southeast Idaho. Non-motorized trails for hiking, backpacking and riding horses are available in several areas. Travel the mountain ridges from Soda Springs to the Southern state line on the 55-mile Highline Trail. For a more family-friendly nature walk, explore the 0.7-mile looped Scout Mountain Nature Trail. Lava's Centennial Trail leads hikers to a beautiful overlook of downtown Lava Hot Springs.

GOLF COURSES open to the public listed by city, number of holes, & phone number: *Aberdeen* -9, 208-397-5308; *American Falls* -9, 208-226-5827; *Bear Lake* -9, 208-945-2744; *Blackfoot* -18, 208-785-9960; *Grace* -9, 208-425-3233; *Lava Hot Springs* -9, 208-648-4170; *Montpelier* -9, 208-847-1981; *Pocatello Highland* -18, 208-237-9922; *Pocatello Riverside* -18, 208-232-9515; *Preston* -18, 8208-52-2408; *Soda Springs* -9 208-547-2204.

BIRDING Right in our own backyard, the American Falls migration corridor is recognized as an IBA site by the Idaho Audubon Council. Birders will see over 200 bird species along the corridor. You'll also want to visit Curlew National Grasslands, in Oneida and Power counties, for Sage Thrasher, Sharp-tailed Grouse, Mountain Bluebird, and Ferruginous Hawk. 45 sites throughout the area are listed on our website and in the downloadable brochure "Birding Trails in Southeast Idaho." It also lists species, season, and habitat.

ROCK CLIMBING Pocatello's Ross Park provides climbing routes for all skill levels. The basalt rock cliffs have two main areas, Sunny Side and Shady Side. Routes are rated from 5.6-5.12 between the two climbing areas. Parts of these routes reach up to 30 feet! Ross Park is also home to the Pocatello Pump, the oldest rock-climbing competition in America. This competition has divisions for locals and non-locals. Contestants and spectators come from all over to see and participate in some "rocky" climbing.



FISHING 44 lakes and reservoirs dot the Southeast Idaho landscape and provide ample fishing opportunities for legendary catches. *Chesterfield* and *Daniels Reservoirs* have fantastic fishing holes with rainbow trout and cutthroat trout. *Lamont Reservoir* has bluegill, pumpkinseed, sunfish, largemouth bass, and more! The *Blackfoot River* is a 130-mile sizeable, flowing river and is an appreciable setting for fly fishing as its many miles help keep fly fishing pressure down.

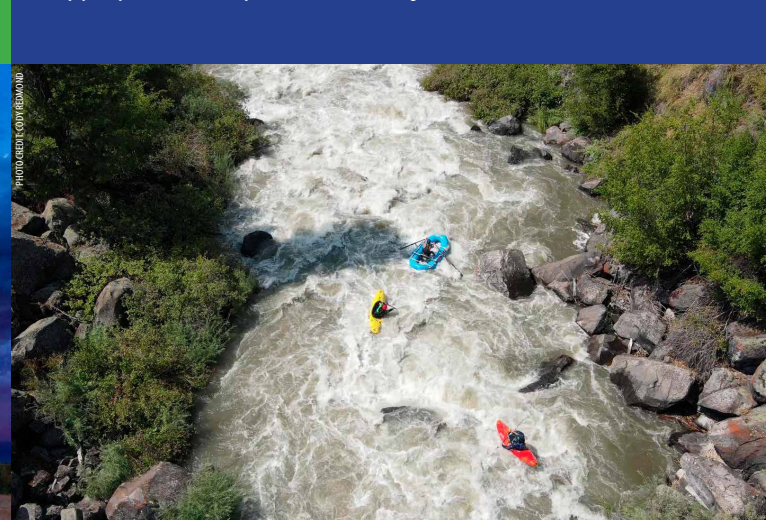
WATER SPORTS Find some time to unwind in scenic Southeast Idaho waters. Visit beautiful *Bear Lake* for unforgettable boating and sailing or rent a jet ski. *American Falls Reservoir* is one of the area's largest bodies of water and is a local's favorite for a fun getaway. Rent a pontoon boat for a family outing or birding opportunities. *Jensen Grove* in Blackfoot is another great boating and jet ski location with a sandy beach for the little ones.

SWIMMING *Lava Hot Springs Olympic Swimming Complex* (pictured below) is quickly becoming one of Idaho's premiere water parks. It houses a one-million-gallon outdoor swimming pool with a shallow end and deep end with platforms and diving boards. *The Portneuf Kiddie Cove*, located inside the indoor swimming complex, has water fountains and a zero-depth pool which is perfect for first-time swimmers. For a swim in nature, hike to *Bloomington Lake*, one of many mountain lakes in the area. *Bloomington Lake* is a scenic location with snow-capped cliffs overlooking the water.



TUBING Lava Hot Springs is home to not only great swimming pools and hot springs, but it also features one of the best floating rivers in the country! (pictured below right) This portion of the *Portneuf River* includes drops, rapids, and deep water. Visitors can rent tubes from vendors along the river. For a slower moving current, float the lower *Portneuf River* in Pocatello.

PADDLE SPORTS Southeast Idaho is an outdoor playground, and one of the best ways to explore it is on the water! Use stand-up paddleboards at *Bear Lake* and venture the turquoise-blue water. Rent a kayak at *American Falls Reservoir* for a day floating the largest reservoir of the *Snake River*. Take a canoe or kayak down a portion of the *Snake River* from *Tilden Bridge* to *McTucker Ponds*. It's a relaxing stretch of water, and you can even drop a line and try catching fish along the way! *Black Canyon Gorge* (pictured below), located right outside Grace, has class 5 whitewater rapids which is appropriate for expert boaters only.



As the weather turns cold, anticipation of the flying snow creates enthusiasm for playing in Southeast Idaho's winter wonderland, as well as looking forward to a relaxing trip to the hot pools afterward. Round out a winter getaway in a backcountry yurt, cabin or cozy hotel room.

SNOWSHOEING Many summertime trails make great places to enjoy winter's scenic beauty. The *Highline Trail* or the *Bear River* countryside, where steam from natural geothermal waters rise, create stunning photography opportunities. Rentals are available at *Baker Ranch* in Lava Hot Springs. Take a loop or head up a mountain draw with Fido on the *Idaho State Parks and Recreation Park n' Ski Program*. Just South of Pocatello, seven plowed lots provide access to five different trails with out-and-back experiences, loops and even a ripping downhill.

CROSS COUNTRY SKIING Seven miles south of Pocatello is the *East Fork Mink Creek Nordic Center* with 20km of groomed skate and classic ski trails as well as snowshoe trails and a sledging hill. *Kelly Park* in Soda Springs offers about 7km of groomed trails. *Baker Ranch* in Lava Hot Springs has a groomed trail for beginner and intermediate skinny skiers. Buy an Idaho Parks and Recreation Park-n-Ski pass to break your own trail from seven plowed parking lots in the *Mink Creek Park n' Ski Area*. Passes are also honored in Oregon.

ALPINE SKIING & SNOWBOARDING For an honest challenge, *ski Pebble Creek Ski Area* on Mount Bonneville east of Inkom. 2,200 vertical feet offer 54 runs of every level of difficulty. Two groomed terrain parks are continually growing and changing. Festivals like the Telemark, the Freestyle Rally, and the Wildflower Festival add to the ski area's popularity. Spectators love to attend the Monster Dummy Jump. Dummies mounted on skis or snowboards cruise a downhill course with a jump at the bottom. For information on Snowshoeing, XC-Skiing, Downhill Skiing and Snowboarding visit idahohighcountry.org/cat/cross-country-skiing/

ICE FISHING on *American Falls Devils Creek* and over 30 other reservoirs is a popular winter pastime. Fish *Bear Lake* for the Bonneville Cisco, a species found nowhere else on earth. Other fish in the area include trout, chinook, salmon, steelhead, sturgeon, bass, bluegill, perch and more. Download "Ice Fishing in Southeast Idaho" for locations, species and licensing requirements. idahohighcountry.org/cat/ice-fishing/

SNOWMOBILING Wide open powdery playgrounds, mountain trails, and fresh air on over 600 miles of groomed trails lead to magnificent winter scenery in Southeast Idaho's winter wonderland. Easy access to trailheads, and snowmobile rentals are available in most communities. Warming huts, yurts and lodges are accessible from the trails. Several Guest Ranches offer snowmobiling right from the front door. For GPS coordinates, registration, rental information and to download trail maps, go to idahohighcountry.org/snowmobile/



Pioneer history is a major part of what helped shape the culture of Southeast Idaho. Through the Rocky Mountains, across the desert plains, and along our beautiful rivers, pioneers blazed the trail for modern day living. We can appreciate their history as we retrace their steps at places like the *Fort Hall Replica* and *Massacre Rocks State Park Visitors Center* (pictured above). Travel the *Pioneer Historic Byway* and the *Bear Lake-Oregon Trail Scenic Byway* for educational stops and the pastoral beauty of a bygone era.

FRANKLIN HISTORIC DISTRICT Multiple historic buildings in Franklin include the *Pioneer Relic Hall*, the one-room, one-story *Old City Hall*, and the *Hatch Home*.

ONEIDA STAKE ACADEMY (Pictured above right) *The Oneida Stake Academy's* construction lasted four years, from 1890-1894, under the guidance of German-born castle maker, John Nuffer. It served as the community's school, event center, and meeting house. In 2004, it was moved from Preston High School to its current location and is now a culturally rich cultural center and museum

HOOVER SPRING After traveling 30 miles from the Clover Creek encampment, the naturally carbonated water of *Hooper Spring* (pictured right) in Soda Springs was a delight to Oregon Trail encampments. It is famous for its bubbly carbonated waters where pioneers would combine sugar and flavoring to make homemade soda pop. Today, visitors can still make their own sodas and make a toast to the travelers of long ago.

PARIS TABERNACLE Designed in 1889 to serve as a meeting house for The Church of Jesus Christ of Latter-day Saints, the tabernacle is a result of a massive 15-year toil. It is an impressive Romanesque red sandstone building quarried from *Indian Creek Canyon* 18 miles away across *Bear Lake*. Tours are offered Memorial Day through Labor Day. (Pictured right)

THE NATIONAL OREGON/CALIFORNIA TRAIL CENTER The center in Montpelier utilizes film, paintings, historical displays and live performers in period costume to help visitors learn more about the historical migration across America of more than a half-million people. Visitors walk on the very soil of the Clover Creek Encampment which was significant as having crossed the last stretch of the Rocky Mountains.

CHESTERFIELD The Historic District is without residents, but not abandoned. In 1980, it was listed on the National Register of Historic Places and is also on the Mormon Historic Sites Foundation's Mormon Historic Sites Registry. It includes 41 buildings and eight sites, spread out over an area of 2,160 acres. Chesterfield is open for tours from Memorial Day through Labor Day, with a large celebration every Memorial Day weekend. (Pictured at bottom)

MALAD VALLEY HERITAGE SQUARE Located in nearby Samaria, is a venue created to honor the Welsh pioneer legacy. Malad Valley contains the highest percentage of Welsh descendants outside of Wales, and the square honors this heritage with three authentic pioneer cabins. Olive Davis Osmond, mother of the famous Osmond family band, was born in the *Thomas John Davis Cabin*. A trip to Heritage Square includes the Welsh Children's Farm where kids can meet Welsh sheep and ponies.

idahohighcountry.org/historic/



Three forces of nature helped shape the landscape to become what it is today: shifting land plates to push the mountains up, two major volcanic eruptions, and the massive *Lake Bonneville* flood. Southeast Idaho consists of seven mountain ranges descending from the Rocky Mountains. Visitors come from all over to witness geological formations that can't be found anywhere else. From rock passes to underground lava tubes, see why Southeast Idaho is a rockhound's haven.

MINNETONKA CAVE Take a half-mile tour through astounding stalactites, stalagmites, and banded travertine. *Minnetonka Cave*, located in St. Charles, is Idaho's largest limestone cave with tours available for groups of up to 30 people. The cave stays at a cool 40°F all year so make sure to bring appropriate clothing for your tour. (Pictured above)

PARIS ICE CAVE Another stunning must-see cave on your geological tour is *Paris Ice Cave*. Just 10 miles west of Paris, the cave offers explorers a glimpse into the uniqueness of Southeast Idaho. As water runs down into the cave from surrounding hills, ice is formed and stays throughout the year. The cave is cold and contains ice even in the hottest months. July is one of the best times to visit as water dries up and makes your visit through the ice much more manageable.

NITER ICE CAVE The cave was formed from lava flowing out of a vent thousands of years ago. Early pioneers used this cave for food storage and refuge. The cave maintains a cool temperature year-round, and icicles are often found hanging from the ceiling. It is located just south of Grace and has 1,200+ feet of tunnel to explore and spelunk.

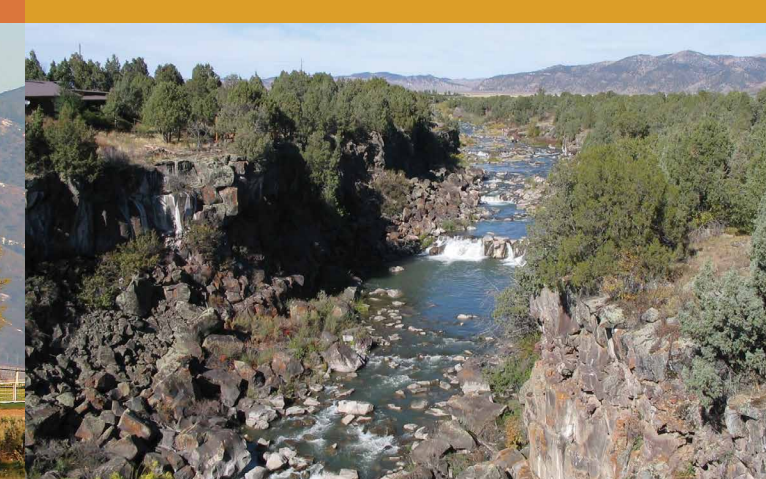
BLACK CANYON The canyon is just one mile west of Grace and portrays magnificent 100-ft high black lava cliffs. The *Bear River* cut through the canyon and continues to run the length of the gorge. Visitors come from all over to see the stunning black rock pass and rolling rapids. The rapids are famous for being some of the most challenging in the entire country. (Pictured at bottom)

CHINA HAT Located near Soda Springs, this rhyolite dome or rift volcano is an exploratory wonderland for any geologist. *China Hat* was formed around older volcano lava flows that stretch west to Grace McCammon, Inkom and Pocatello. There are many faults located in the area as well as "grabens" – German for "grave." Grabens are depressions on the earth's surface formed when blocks of crust drop down.

FORMATION SPRINGS Less than five miles outside of Soda Springs at the base of the scenic *Aspen Mountains*, *Formation Springs and Cave* is a 195-acre nature preserve with remarkable geological formations featuring terraced mineral pools. It is a refuge for deer, elk, and waterfowl. Nature trails take visitors close to both geological formations and wildlife. (Pictured right)

RED ROCK PASS A remnant of Pleistocene *Lake Bonneville*, the pass cuts through Paleozoic shale, limestone, and dolomite which created a narrow gap two miles in length. Immediately downstream from *Red Rock Pass* is *Marsh Creek Valley* where the flood eroded the valley to the shape it is now leaving rich soil for farming. The tumbled and polished boulders from here to the *Snake River* are a result of this flood. (Pictured right)

idahohighcountry.org/cat/geology/



BANNOCK COUNTY HISTORICAL COMPLEX AND FORT HALL REPLICA *Avenue of the Chiefs, Pocatello* ID (208) 233-0434 Exhibits illustrate Pocatello's early railroad history and Shoshone-Bannock Indian artifacts. Enter the life-size Fort Hall Replica and the world of 19th century explorers, trappers, fur traders, Native Americans, pioneers, gold seekers, and historic figures. Adjacent to Zoo Idaho.

BINGHAM COUNTY HISTORICAL MUSEUM 190 N. Shilling Ave., Blackfoot ID (208) 785-8065 Resembles a southern plantation home and houses an historic collection of classic dolls and Native American artifacts. Tours available. **BUTCH CASSIDY MUSEUM** 833 Washington St., Montpelier, ID The last standing bank in the world actually robbed by the infamous outlaw Butch Cassidy in 1896.

CARIBOU COUNTY HISTORICAL MUSEUM 100 E. Hooper Ave., Soda Springs, ID (208) 221-3181, (208) 604-0524 or (208) 317-5148 Housed in the historic building that was originally a branch of the Zion's Cooperative Mercantile Institution (ZCMI) in the late 1800's and later other retail entities including Stoor's Grocery. Open Saturdays 10am to 4pm or call for a tour.

DAUGHTERS OF UTAH PIONEERS MUSEUM Center Street, Soda Springs ID (208) 547-3706 The Daughters of the Utah Pioneers built this museum in 1983. It features antiques, photographs, and books depicting local history.

FRANKLIN IDAHO RELIC HALL Main Street, Franklin ID (208) 644-2290 Houses relics brought or acquired by pioneers, including photo collection.

IDAHO MUSEUM OF NATURAL HISTORY 698 E Dillon St., Pocatello ID (208) 282-3317 Discovering Idaho, one story at a time. Kid's Discovery Room!

IDAHO POTATO MUSEUM 321 NW Main St., Blackfoot, ID (208) 785-2517 Not only can you take a great selfie with a giant potato, you can find out just what it takes to make those yummy French fries and chips! Visitors receive free Taters for Out-of-Staters and pins for children. Gift shop, cafe, RV parking, park for picnic. Trolley rides around Blackfoot's historic downtown begin here.

MASSACRE ROCKS STATE PARK 3592 Park Lane, American Falls, ID (208) 548-2672 Historic Area operated by the State of Idaho. The park has stories to tell which date back to times best described in geologic terms.

MUSEUM OF CLEAN 711 S. 2nd Ave., Pocatello, ID (208) 236-6906 Come interested, Leave inspired. Walk into an awesome 75,000 sq ft complex of excitement, education and inspiration for the whole family. Open Tues-Sat 10am-5pm.

THE NATIONAL OREGON/CALIFORNIA TRAIL CENTER 320 N. 4th Street, Montpelier, ID 866-847-3600 In Bear Lake Valley on the historic site of the original Oregon Trail. Built to preserve, perpetuate and promote pioneer history and heritage of the Oregon/California Trail and the Bear Lake Valley. The Rails and Trails Museum is located inside.

ONEIDA PIONEER MUSEUM 27 Bannock St., Malad City, ID (208) 766-4947 Built in 1914 as a Drug Store. Original pressed-tin ceiling and safe are in good condition and interesting features.

POWER COUNTY HISTORICAL MUSEUM 500 Pocatello Ave., American Falls, ID (208) 226-1325 The museum opened in 2007 and features exhibits detailing the history of Power County including the historic movement of the town to make way for the American Falls Dam.

PARIS HISTORICAL MUSEUM 345 Main Street, Paris, ID (208) 945-2212 Displays local history artifacts and located directly across the street from the LDS Tabernacle in Paris, Idaho. Memorial Day-Labor Day.

SHOSHONE-BANNOCK TRAIL MUSEUM Exit 80 off I-15, Fort Hall, ID 800-806-9229 With old photographs, displays and exhibits you learn how the Shoshone-Bannock people lived and settled the area around eastern Idaho, told from their point of view. Open Mon-Fri. Closed Federal & Tribal Holidays. Free admission for any Tribal citizen (must show Tribal ID card).

SOUTH BANNOCK COUNTY HISTORICAL CENTER 110 E. Main St., Lava Hot Springs, ID (208) 776-5254 Permanent and rotating exhibits about Lava Hot Springs area history as well as Arimo, Inkom, Downey, McCammon, Virginia and Swan Lake.

idahohighcountry.org/cat/museums/

