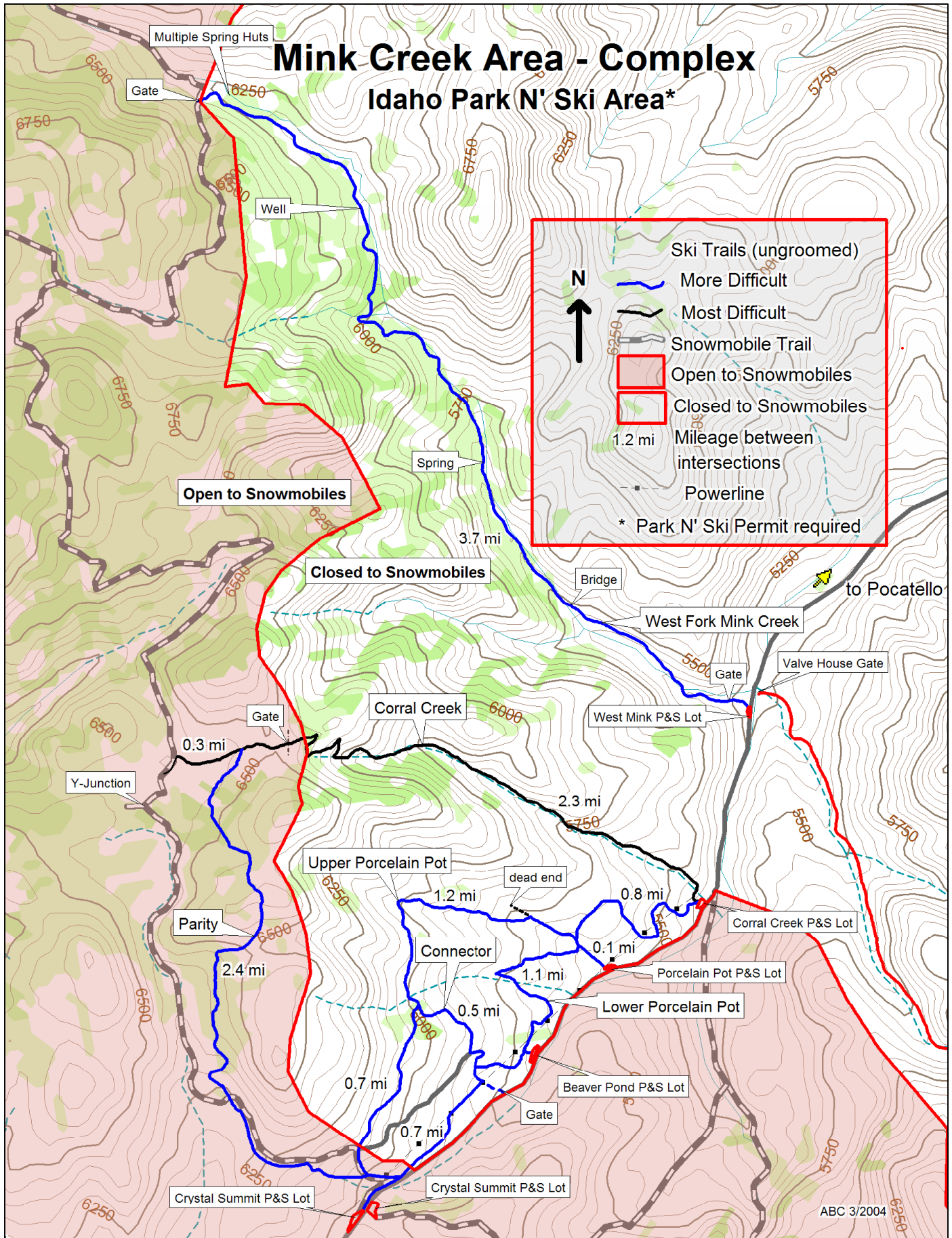


Mink Creek Area - Complex

Idaho Park N' Ski Area*

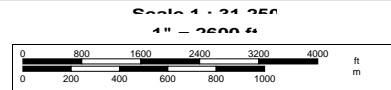


N
↑

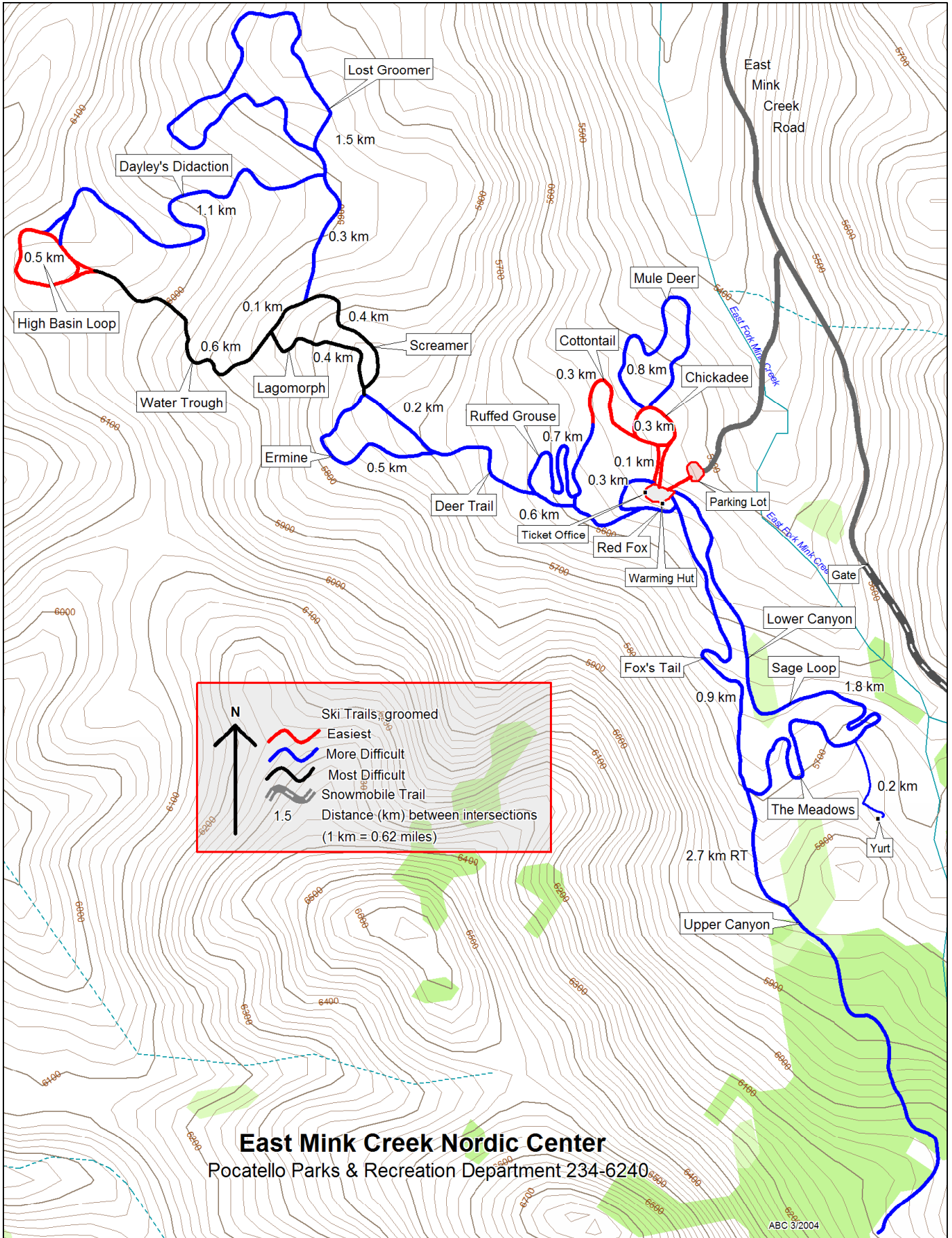
- Ski Trails (ungroomed)
- More Difficult
- Most Difficult
- Snowmobile Trail
- Open to Snowmobiles
- Closed to Snowmobiles
- 1.2 mi Mileage between intersections
- Powerline
- * Park N' Ski Permit required



© 2002 DeLorme. Topo USA ®. Data copyright of content owner.
www.delorme.com



ABC 3/2004

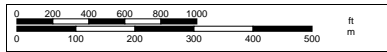


Legend

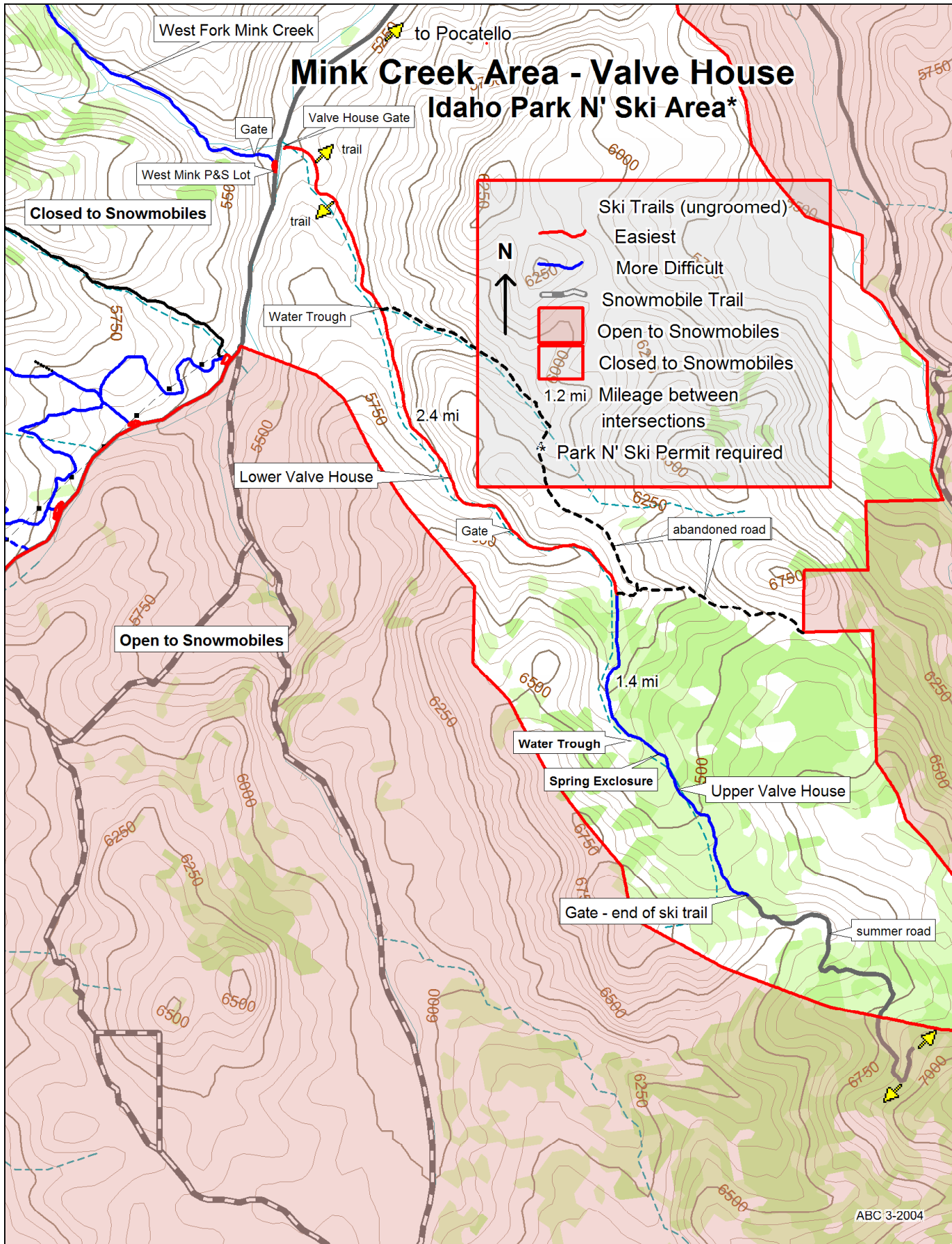
- Ski Trails, groomed
- Easiest (Red line)
- More Difficult (Blue line)
- Most Difficult (Black line)
- Snowmobile Trail (Grey line)
- 1.5 Distance (km) between intersections (1 km = 0.62 miles)



© 2002 DeLorme, Topo USA ®. Data copyright of content owner.
 www.delorme.com



Mink Creek Area - Valve House Idaho Park N' Ski Area*

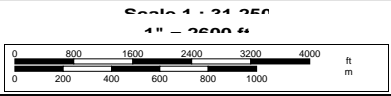


Legend

- Ski Trails (ungroomed)
 - Easiest (Red line)
 - More Difficult (Blue line)
- Snowmobile Trail (Black dashed line)
- Open to Snowmobiles (Pink shaded area)
- Closed to Snowmobiles (White area)
- 1.2 mi Mileage between intersections
- * Park N' Ski Permit required



© 2002 DeLorme. Topo USA ®. Data copyright of content owner.
www.delorme.com



ABC 3-2004